

Module 1: Teaching young people with ASD/DS

Objectives

Understand the unique challenges faced by youth with ASD and DS

Learn effective teaching strategies

Promote inclusivity and create an inclusive learning environment

Common Challenges

- Sensory sensitivities
- Communication barriers
- Behavioural issues



Creating an Inclusive Environment

Recognise sensory sensitivities in students

- Provide sensory-friendly accommodations.
- Create quiet zones for self-regulation.
- Clear communication

Social skill development

- Teach essential social skills explicitly.
- Use role-playing and modeling.
- Practice patience and understanding.

Peer Involvement

- Encourage peer support and inclusion.
- Organise inclusive group activities.
- Foster understanding and empathy among peers.



Communication Strategies

- Visual supports (PECS, social stories)
- Augmentative and Alternative Communication (AAC) devices
- Use of non-verbal cues

Teaching Strategies

- Structured Routines and Visual Schedules:
- Establish a consistent daily routine.
- Use visual schedules to help students predict and understand daily activities.
- Incorporate visual cues and timers for transitions.
- Task Analysis and Breaking Tasks into Smaller Steps:
- Break down complex tasks into manageable steps.
- Provide clear instructions for each step.
- Offer support as students progress through the task.



Teaching Strategies

- Differentiated Instruction:
- Adapt your teaching methods to accommodate diverse learning styles.
- Offer choices and alternative ways to complete assignments.
- Focus on strengths and interests when designing lessons.
- Multisensory Learning:
- Engage multiple senses in the learning process (sight, sound, touch).
- Use hands-on activities and manipulatives.
- Incorporate music, art, and movement into lessons.
- Visual Supports and Aids:



Teaching Strategies

- Utilise visual supports such as visual schedules, social stories, and visual cues.
- Create visual organizers for instructions, assignments, and expectations.
- Encourage students to use visual supports for self-regulation.
- Repetition and Consistency:
- Reinforce key concepts through repetition.
- Maintain consistency in expectations and routines.
- Provide frequent opportunities for review and practice.



Teaching Strategies

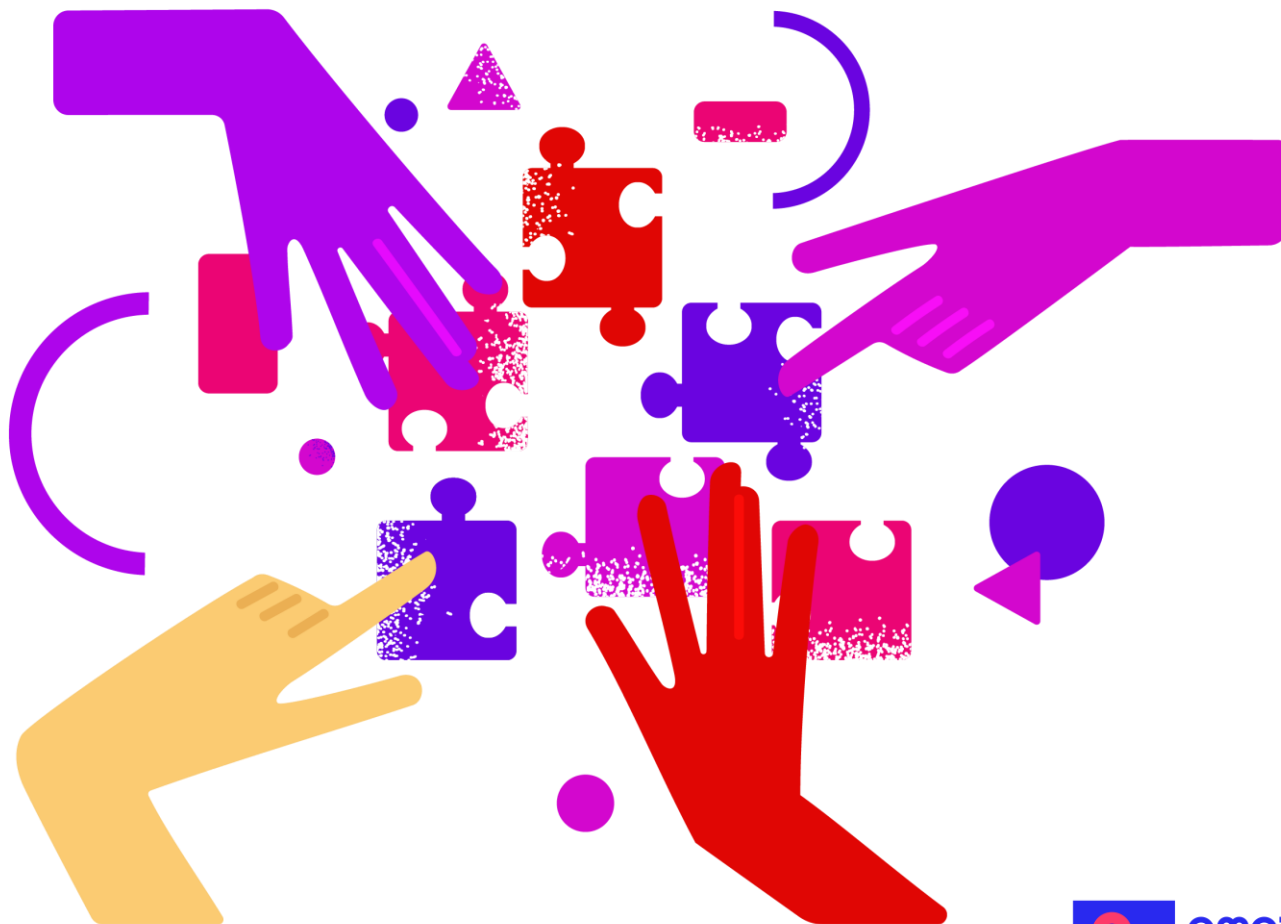
- Use of Technology:
- Integrate educational apps and software tailored to individual needs.
- Explore assistive technology and communication devices.
- Monitor screen time to balance with other activities.
- Collaboration with Support Staff:
- Coordinate with speech therapists, occupational therapists, and other specialists.
- Implement recommended strategies and interventions.
- Ensure consistency between classroom and therapy sessions.



Teaching Strategies

- Positive Reinforcement:
- Use a system of positive reinforcement to motivate and reward desired behaviors.
- Provide specific, immediate feedback.
- Celebrate small successes and milestones.
- Flexible Assessment Methods:
- Adapt assessments to accommodate diverse learning profiles.
- Allow for alternative forms of assessment, such as portfolios or verbal presentations.
- Ensure assessment criteria are clear and accessible.





Thank you!

Website under construction

email@kmop.org